



DEVANTA EXPORTS

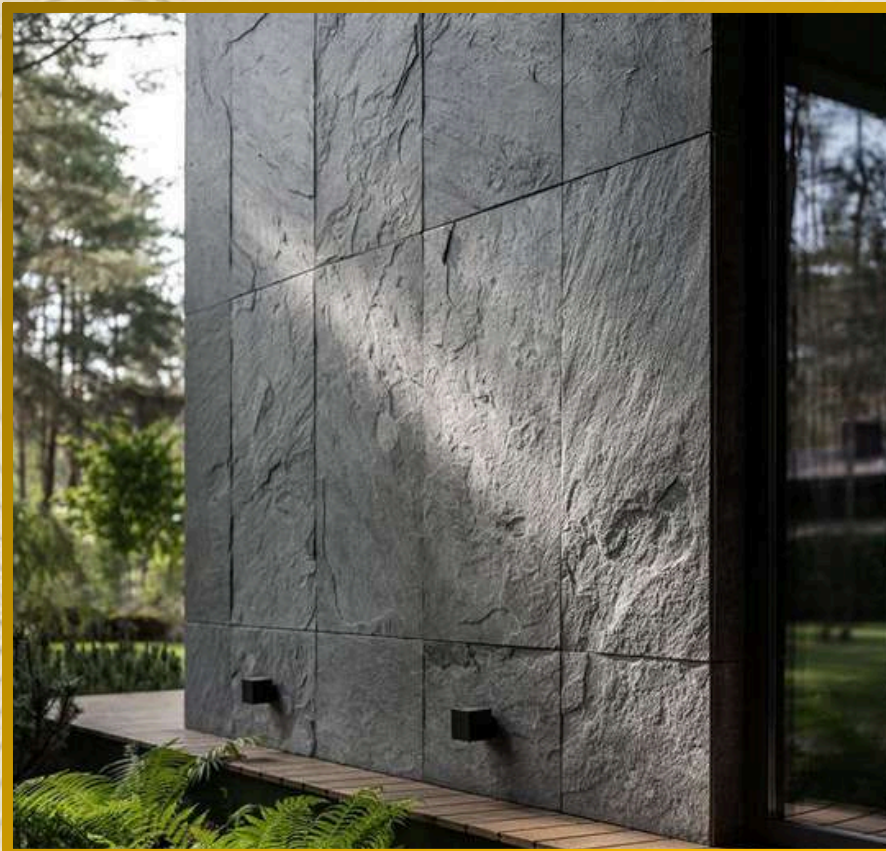
HOUSE OF NATURAL STONES

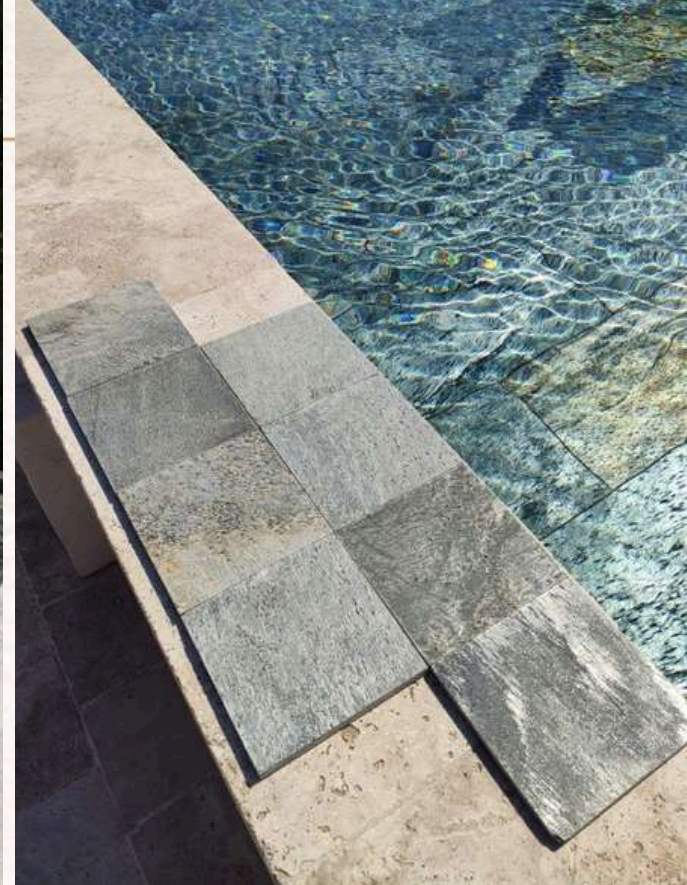
SLATES | MOSAICS | WALL PANNELS | SANDSTONE



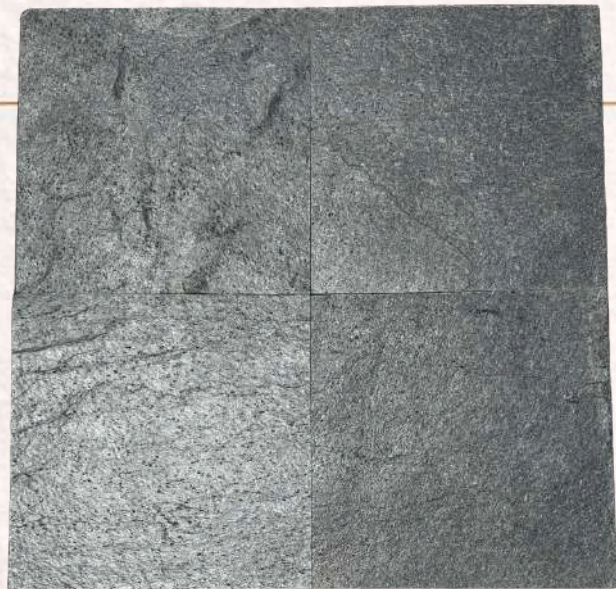
www.devantaexports.com

GALLERY









SILVER-GREY



SILVER-SHINE



D-GREEN

NATURAL

**S
L
A
T
E
S**



JACK BLACK



H-WHITE



ZEERA GREEN

D - GREEN



Short Description :

D-Green is a premium natural stone defined by layered grey-green tones, earthy mineral variations, and fine linear striations. Its raw, matte surface highlights authentic stone character, making it suitable for architectural applications that demand durability, grip, and a natural aesthetic.

Availability: Available in
Natural, Honed and Honed
+ Brush finishes

Category: Nature Stone
Surface Finish

MATERIAL DETAILS

Stone Type: Natural Stone
Finish Options: Natural, Honed
Color Family: Grey-Green with muted mineral and olive undertones
Pattern / Veining: Linear, directional natural striations
Texture Depth: Medium to High, visibly tactile

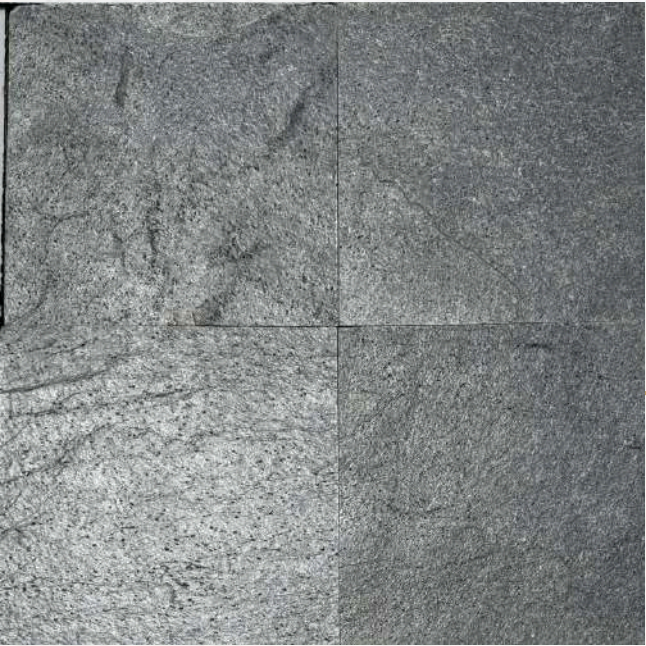
Available Sizes

- Tiles Sizes : 200x 400 mm
300 x 300 mm
400 x 400 mm
300 x 600 mm
400 x 600 mm
- Thickness Options : 10mm, 12mm
(As per Customer Requirement)

Technical Properties

- Water Absorption: Low
- Density: High
- Durability: Excellent
- Maintenance: Low
- Suitability: Interior and Exterior

SILVER GREY



Short Description :

Silver Grey is a premium natural stone characterized by soft silver-grey tones, subtle mineral movement, and refined linear patterns.

Its natural matte surface enhances the stone's authentic texture, making it ideal for architectural and design applications that require strength, slip resistance, and a timeless, understated aesthetic.

Availability: Available in
Natural, Honed and Honed
+ Brush finishes

Category: Nature Stone
Surface Finish

MATERIAL DETAILS

- Finish Options: Natural, Honed
- Color Family: Silver to mid-grey with subtle ash and charcoal undertones
- Pattern / Veining: Fine linear to slightly directional natural striations
- Texture Depth: Medium, smooth yet naturally tactile

Available Sizes

- Tiles Sizes : 200x 400 mm
300 x 300 mm
400 x 400 mm
300 x 600 mm
400 x 600 mm
- Thickness Options : 10mm, 12mm
(As per Customer Requirement)

Technical Properties

- Water Absorption: Low
- Density: High
- Durability: Excellent
- Maintenance: Low
- Suitability: Interior and Exterior

SILVER SHINE



Short Description :

Silver Shine is a premium natural stone distinguished by cool silver-grey tones, subtle reflective mineral flecks, and gentle linear movement. Its natural surface brings a refined yet authentic stone character, making it ideal for architectural spaces that seek durability, visual depth, and a contemporary aesthetic.

Availability: Available in
Natural, Honed and
Honed + Brush finishes

Category: Nature Stone
Surface Finish

MATERIAL DETAILS

Stone Type: Natural Stone
Finish Options: Natural, Honed
Color Family: Cool silver-grey with subtle
reflective mineral highlights
Pattern / Veining: Soft linear movement with
fine natural striations
Texture Depth: Medium, slightly textured with a
refined tactile feel

Available Sizes

- Tiles Sizes : 200x 400 mm
300 x 300 mm
400 x 400 mm
300 x 600 mm
400 x 600 mm
- Thickness Options : 10mm, 12mm
(As per Customer Requirement)

Technical Properties

- Water Absorption: Low
- Density: High
- Durability: Excellent
- Maintenance: Low
- Suitability: Interior and
Exterior

ZEERA GREEN



Short Description :

Zeera Green is a premium natural stone featuring deep green tones enriched with dark mineral speckles and subtle grain movement. Its natural surface emphasizes a bold, earthy character, making it well suited for architectural and landscape applications that require durability, slip resistance, and a strong natural presence.

Availability: Available in
Natural, Honed and
Honed + Brush finishes

Category: Nature Stone
Surface Finish

MATERIAL DETAILS

Stone Type: Natural Stone
Finish Options: Natural, Honed
Color Family: Deep green with dark mineral speckles and earthy undertones
Pattern / Veining: Fine-grained to subtly mottled natural pattern
Texture Depth: Medium to High, distinctly tactile and robust

Available Sizes

- Tiles Sizes : 200x 400 mm
300 x 300 mm
400 x 400 mm
300 x 600 mm
400 x 600 mm
- Thickness Options : 10mm, 12mm
(As per Customer Requirement)

Technical Properties

- Water Absorption: Low
- Density: High
- Durability: Excellent
- Maintenance: Low
- Suitability: Interior and Exterior

JACK BLACK



Short Description :

Jack Black is a premium natural stone defined by deep charcoal-black tones, subtle mineral variations, and a dense, uniform appearance. Its natural surface highlights a bold, solid character, making it ideal for architectural applications that demand strength, durability, and a striking, contemporary aesthetic.

Availability: Available in
Natural, Honed and
Honed + Brush finishes

Category: Nature Stone
Surface Finish

MATERIAL DETAILS

Stone Type: Natural Stone
Finish Options: Natural, Honed
Color Family: Deep black to charcoal with
subtle mineral undertones
Pattern / Veining: Minimal, fine-grained
natural texture with slight tonal variation
Texture Depth: Medium, dense and naturally
tactile

Available Sizes

- Tiles Sizes : 200x 400 mm
300 x 300 mm
400 x 400 mm
300 x 600 mm
400 x 600 mm
- Thickness Options : 10mm, 12mm
(As per Customer Requirement)

Technical Properties

- Water Absorption: Low
- Density: High
- Durability: Excellent
- Maintenance: Low
- Suitability: Interior and
Exterior

HIMACHAL WHITE



Short Description :

Himachal White is a premium natural stone characterized by soft white to light grey tones, gentle mineral speckling, and a clean, uniform appearance. Its natural surface enhances brightness while retaining authentic stone texture, making it ideal for architectural spaces that seek durability, elegance, and a timeless, minimal aesthetic.

Availability: Available in
Natural, Honed and
Honed + Brush finishes

Category: Nature Stone
Surface Finish

MATERIAL DETAILS

Stone Type: Natural Stone
Finish Options: Natural, Honed
Color Family: Grey-Green with muted mineral and olive undertones
Pattern / Veining: Linear, directional natural striations
Texture Depth: Medium to High, visibly tactile

Available Sizes

- Tiles Sizes : 200x 400 mm
300 x 300 mm
400 x 400 mm
300 x 600 mm
- Thickness Options : 10mm, 12mm
(As per Customer Requirement)

Technical Properties

- Water Absorption: Low
- Density: High
- Durability: Excellent
- Maintenance: Low
- Suitability: Interior and Exterior



COPPER



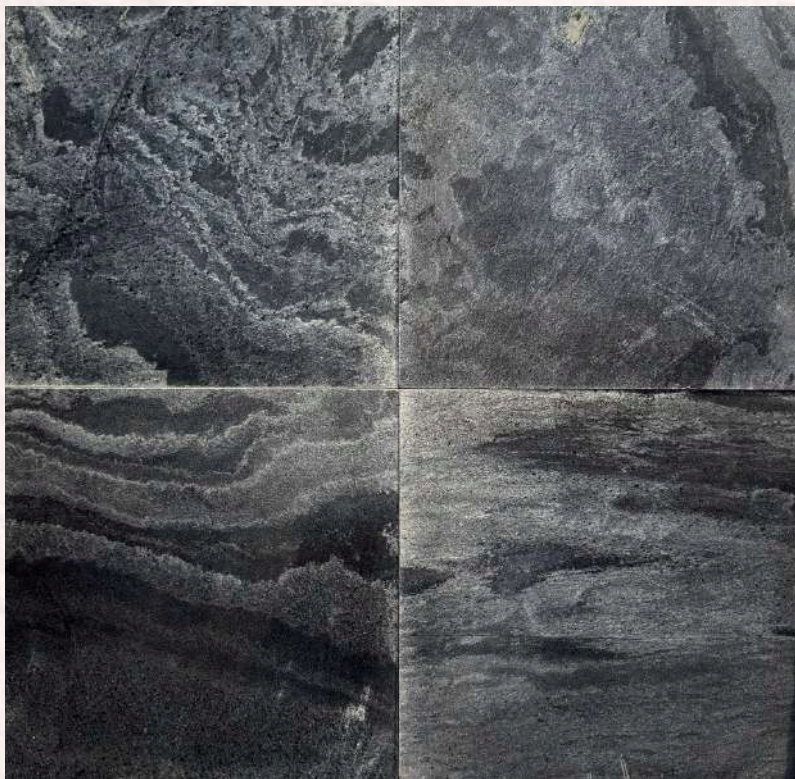
JACK MULTI



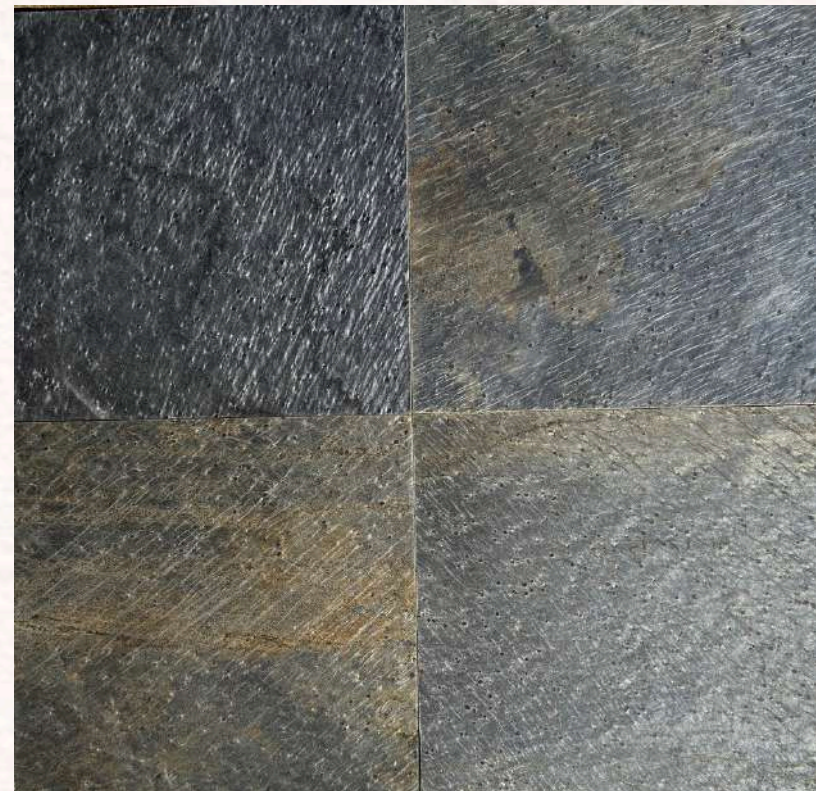
KUND MULTI



GOLDEN



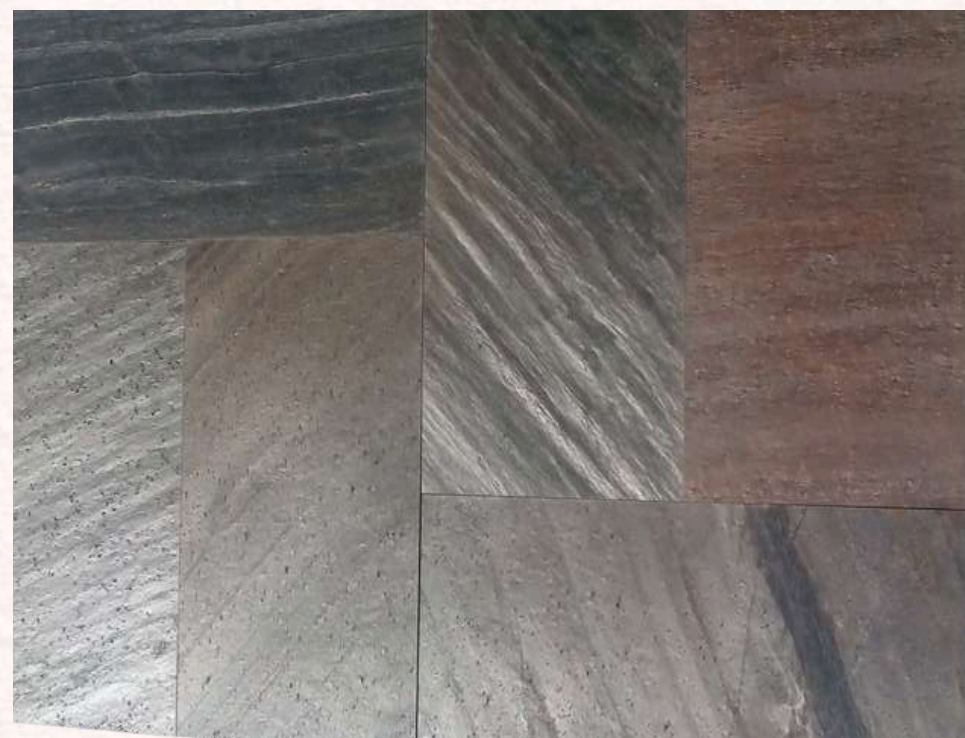
SILVER GREY



DEOLI GREEN



SILVER SHINE



COPPER

POLISH

**S
L
A
T
E
S**

WALL PANNEL

Wall Panels are architectural cladding elements used to enhance interior and exterior walls by adding texture, depth, and visual character. They offer a refined surface finish while also protecting walls from wear and environmental exposure. Designed for durability and design flexibility, wall panels help create cohesive, elegant spaces with a strong architectural identity and a premium, finished appearance.



JACK BLACK



SILVER SHINE



DEOLI GREEN



HIMACHAL WHITE



SILVER GREY



MINT



ZEERA GREEN



KUND MULTI



TEAKWOOD



COPPER

**AVAILABLE IN DIFFERENT SIZES AND
DIFFERENT PATTERNS**

AS PER CUSTOMER REQUIREMENT

60X15X1.2-2.5 CM

WWW.DEVANTAEXPORTS.COM



MOSAICS

Mosaic Stone features small natural stone pieces arranged into detailed patterns, adding texture and visual depth. It offers a refined, durable finish that enhances surfaces with timeless elegance and architectural character



SILVER SHINE



COPPER



DEOLI GREEN



SILVER GREY



ZEERA GREEN



**HIMACHAL
WHITE**





**AVAILABLE IN DIFFERENT SIZES AND
DIFFERNT PATTERNS**

WWW.DEVANTAEXPORTS.COM

THANK YOU.

Inspired by nature. Perfected for you.

We hope our collection sparks your next project. For samples, quotes, or export inquiries, connect with Devanta Exports.

START YOUR PROJECT

Devanta Exports | Insta- @_devantaexports | WhatsApp / phone +917742699700 | INFO@DEVANTAEXPORTS.COM

WWW.DEVANTAEXPORTS.COM